



SPECIFICATIONS

2321 SQ. FT.
DOUBLE CAR GARAGE

Highlights

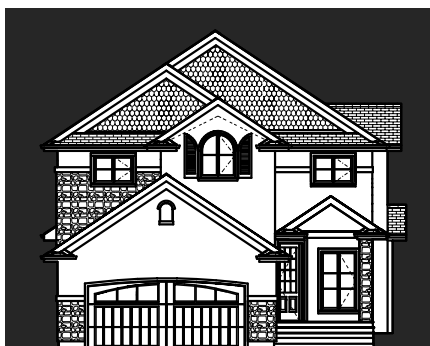
- ▶ 2321 sq. ft. with 3 bedrooms, 2.5 bath, bonus room, main floor laundry
- ▶ 9' ceiling on main floor
- ▶ Basement with separate side entrance
- ▶ Double car garage
- ▶ Open to above
- ▶ Walk-through pantry
- ▶ Butlers or spice kitchen option
- ▶ Mudroom area
- ▶ Customise your plan
- ▶ Vaulted ceiling in bedroom

Features

- ▶ Vinyl planks all over main floor
- ▶ Upgraded modern matte/glossy/textured kitchen cabinets with choice of color, soft closing, 8' island and quartz counter tops throughout
- ▶ Modern metal railing to the second floor
- ▶ Triple pane windows
- ▶ Modern linear electric fireplace
- ▶ Upgraded plumbing with delta faucets
- ▶ Big deck with gas line for BBQ hookup
- ▶ Customized tiled vanity in powder room
- ▶ Stainless steel appliances package
- ▶ MDF shelving throughout



To schedule an appointment or for more information call 780-240-9018 or email us at sales@muttihomes.ca

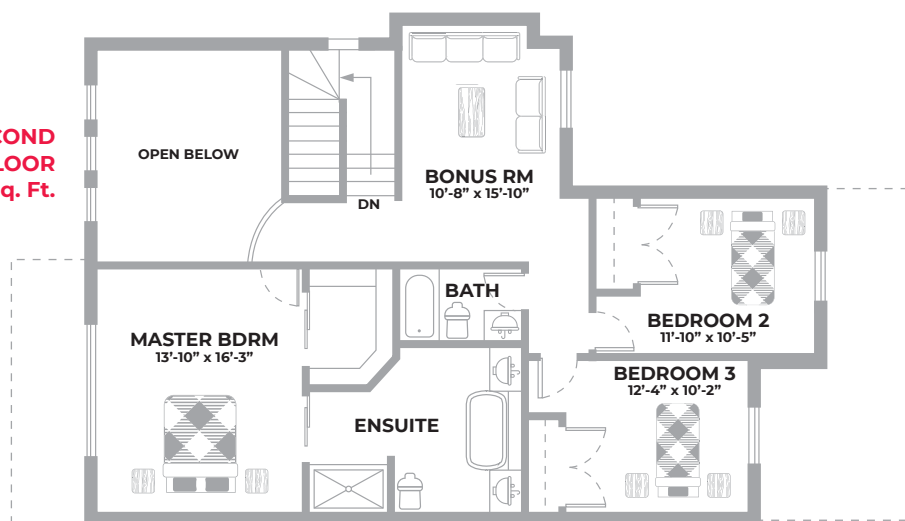


KUBA

2321 SQ. FT. ■ 3 BED. ■ 2.5 BATH
DOUBLE CAR GARAGE

- ➔ 32' / 34' Pocket House
- ➔ Side entrance to basement suite
- ➔ Bonus room & den

SECOND FLOOR ➔ 1179 Sq. Ft.



MAIN FLOOR ➔ 1142 Sq. Ft.

