

AT BLATCHFORD



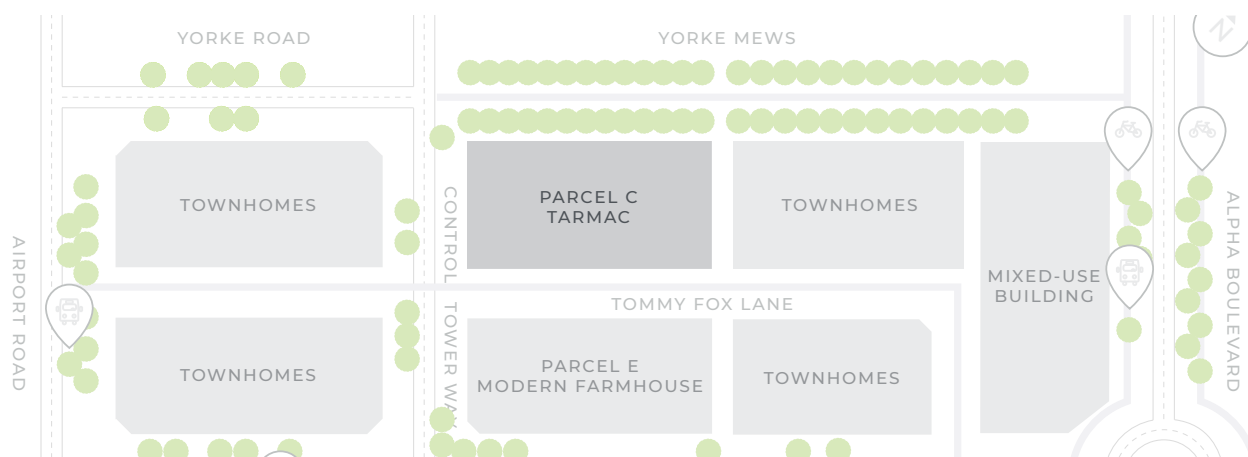
# THE TARMAC TOWNHOMES

MUTTI  
HOMES



## URBAN STYLE LIVING

It's about more of the things you love in one place. Blatchford offers parks to picnic, bike lanes to cycle, and lively street fronts to stroll. Enjoy the ease of walking from a coffee shop to a restaurant to the grocery store and back home again. Live an entire life within your bustling urban neighbourhood.



## THE PARCEL & PROJECT

Stunning contemporary minimalism shines in this project, with its clean lines and cool palette. Enjoy a serene retreat in the heart of the city where you can kick back and relax, entertain, and recharge with both comfort and style.

## PARCEL FEATURES

- ▶ One of the most premium & valuable lots in the community
- ▶ Wider lots (22' - 31')
- ▶ Tree-lined boulevard 5.5m wide
- ▶ Fronts onto a Primary Quiet (PQ) Street, non-vehicular pathway
- ▶ Backs on 8m landscaped alley



To schedule an appointment or for more information call 780-240-9018 or email us at [sales@muttiahomes.ca](mailto:sales@muttiahomes.ca)





## TARMAC SPECIFICATIONS

- ▶ Modern contemporary bespoke townhomes
- ▶ No condo fees (fee-simple)
- ▶ 22' - 31' wide lots with 1670 - 1890 sq ft. floor areas
- ▶ Double detached garage and two car parking pad
- ▶ Three or two bedrooms option, 2.5 bath, flex room, 2nd-floor laundry, 10' ceilings
- ▶ Legal basement/garage suite options
- ▶ Fully landscaped, fenced with rear deck
- ▶ Second-floor balcony options
- ▶ Three designer interior palettes to choose selections from
- ▶ Premium exterior
- ▶ Upgraded interior railing with choice of glass or vertical metal spindles
- ▶ Linear fireplace in the living area
- ▶ Upgraded flooring, plumbing, and lighting fixtures
- ▶ Upgraded modern kitchen cabinetry with quartz/granite countertops all over
- ▶ Appliances credit
- ▶ MDF built-in shelving throughout
- ▶ Four-piece master en-suite with Jacuzzi tub, tiled shower, big vanity counter space, and walk-in closet
- ▶ Geothermal heating and cooling with smart technology
- ▶ Customize your basement plan (1 or 2 bedroom option)
- ▶ 10-year New Home Warranty

**1670 - 1890 SQ. FT.**  
**OPTIONAL BSMT SUITE**

## FEATURES

- ▶ Carbon neutral home
- ▶ Geothermal heating and cooling
- ▶ Highly insulated building envelope, basement, and basement floor
- ▶ Solar ready trusses
- ▶ High quality and efficient triple pane windows
- ▶ Energy star appliances

**M**

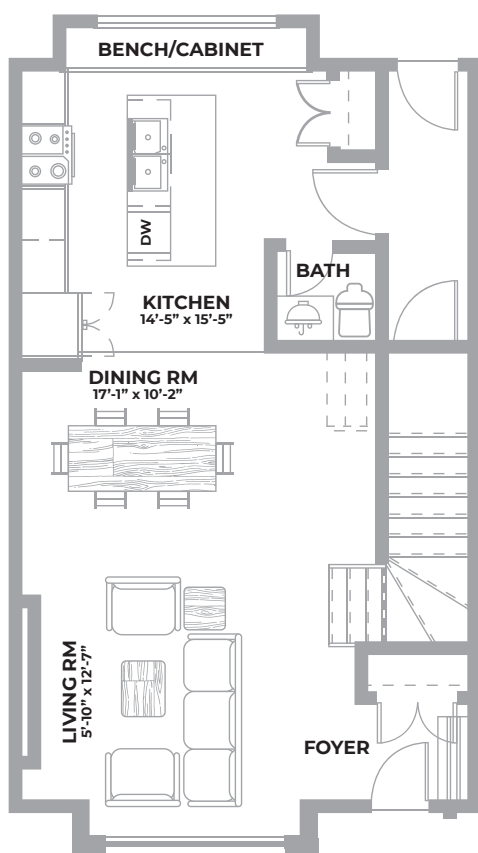
*To schedule an appointment or for more information call 780-240-9018 or email us at [sales@muttiahomes.ca](mailto:sales@muttiahomes.ca)*



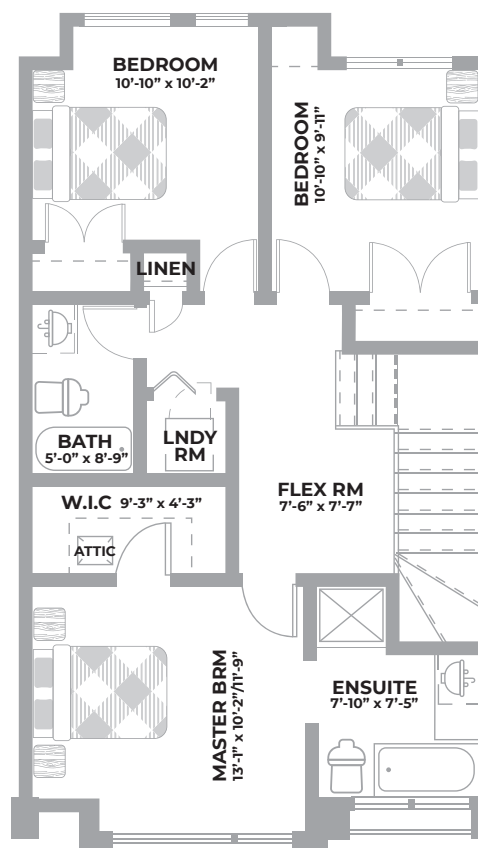
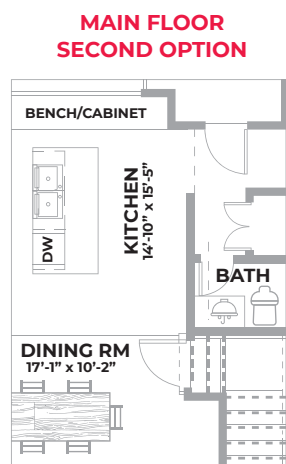
## TARMAC II/III

1670 SQ. FT. ■ 3 BED. ■ 2.5 BATH  
DOUBLE DETACHED CAR GARAGE

- ➔ 22' Pocket House
- ➔ Customize your basement plan (1 or 2 bedroom options available)



MAIN FLOOR ➤ 834 Sq. Ft.



SECOND FLOOR ➤ 836 Sq. Ft.