



THE TARMAC TOWNHOMES

MUTTI

H O M E S

THE TARMAC TOWNHOMES AT BLATCHFORD

URBAN STYLE LIVING

STARTING AT \$499,900

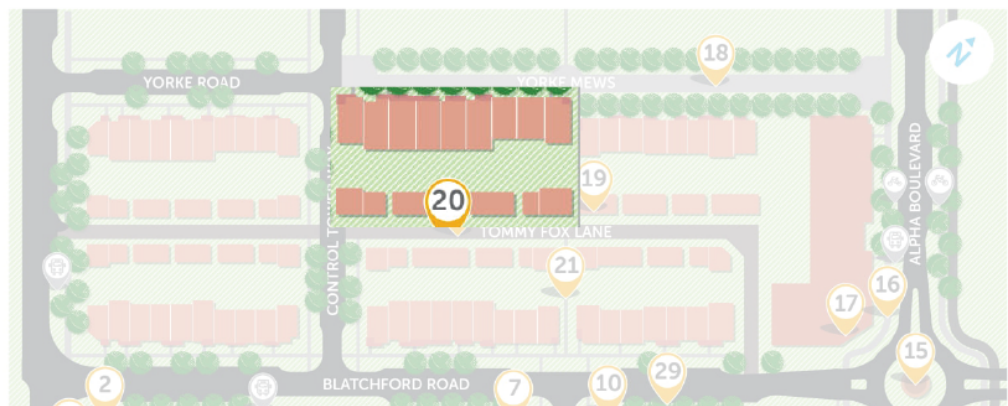
It's about more of the things you love in one place. Parks to picnic, bike lanes to cycle, and lively street fronts to stroll. Walk from a coffee shop to a restaurant to the grocery store, and back home again. Live an entire life within your own bustling urban neighbourhood.

PARCEL FEATURES

- One of the most premium and valuable lots in the community
- Wider lots (22' – 31')
- Treelined boulevard 5.5m wide
- Fronts onto a Primary Quiet (PQ) Street, non-vehicular pathway
- Backs on 8m landscaped alley

THE PARCEL & PROJECT

Stunning contemporary minimalism shines in this project, with its clean lines and cool palette. Enjoy a serene retreat in the heart of the city, where you can kick back and relax, entertain, and recharge with both comfort and style..



FOR MORE INFORMATION
SCHEDULE AN APPOINTMENT

(780) 240 9018
sales@muttihomes.ca

****PROMO:**
CONTACT FOR DETAILS



BUILDER PROMO**

TARMAC I - SPECIFICATIONS

- Corner unit with double detached garage + garage suite (594 sq. ft.)
- 22' wide house on a 29' wide lot
- House: 1693 sq. ft., 3 bed., 2.5 bath., flex room, 2nd floor laundry, 10' ceiling
- Garage Suite: 594 sq. ft., 2 bed., full bath. living room, laundry room & Kitchen
- Fully front and back landscaped, fenced, & rear deck
- Premium exterior
- Upgraded interior railing with choice of glass or metal spindles
- Linear fireplace in living area
- Upgraded flooring and plumbing and electrical fixtures
- Upgraded kitchen with quartz/granite countertops all over
- Stainless steel appliances (\$5000 credit)
- MDF built-in shelving throughout
- 4 piece master en-suite with Jacuzzi tub, custom tiled shower, big vanity counter space and walk-in closet
- Geothermal heating and cooling with smart technology
- Customize your basement plan (1 or 2 bedroom option)
- Customize your garage suite

SUSTAINABLE FEATURES

- Carbon neutral home
- Geothermal heating & cooling
- Highly insulated building envelope, basement, and basement floor
- Solar ready trusses
- High quality and efficient triple pane windows
- Energy star appliances

**1693 SQ. FT.
GARAGE SUITE
\$650,000**

****PROMO:**
CONTACT FOR DETAILS

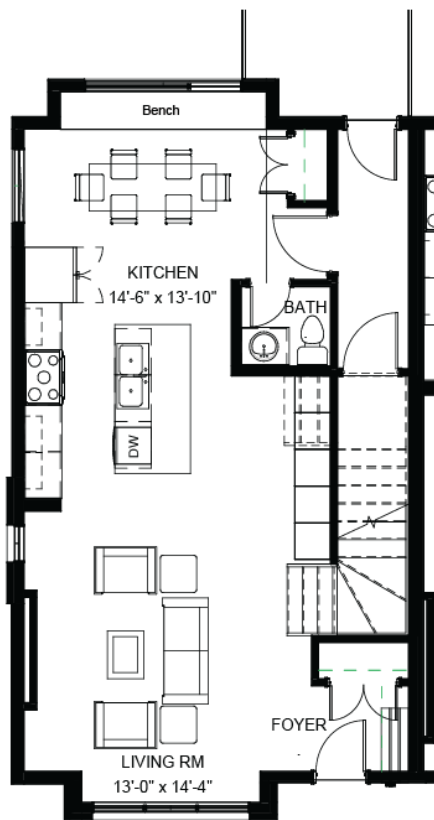
(780) 240 9018
sales@muttihomes.ca

FOR MORE INFORMATION
SCHEDULE AN APPOINTMENT

TARMAC I IN BLATCHFORD

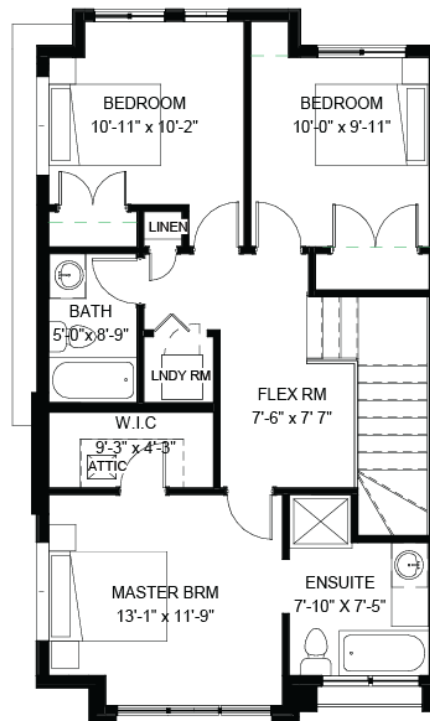
1693 SQ. FT. | 3 BED | 2.5 BATH |
DOUBLE DETACHED CAR
GARAGE SUITE

- 22' Pocket House, 29' wide lot
- customize your basement plan (2 or 1 bedroom option available)
- customize your garage suite (2 or 1 bedroom option available)



MAIN FLOOR

846 Sq. Ft.



SECOND FLOOR

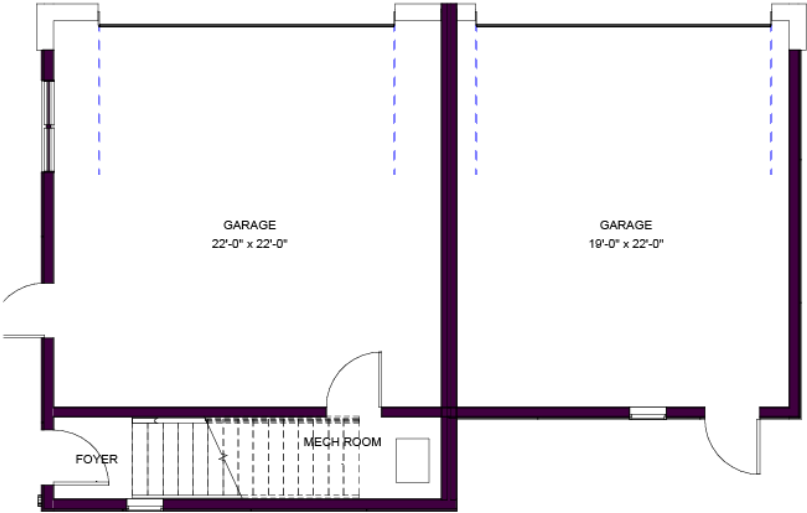
847 Sq. Ft.

GARAGE SUITE - TARMAC I IN BLATCHFORD

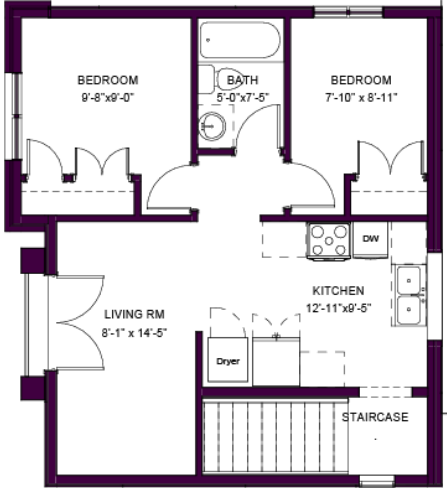
594 SQ. FT. | 2 BED | FULL BATH



- customize your basement plan (2 or 1 bedroom option available)
- customize your garage suite (2 or 1 bedroom option available)



MAIN FLOOR



SECOND FLOOR

594 Sq. Ft.